

Applied BioMath

Corporate Fact Sheet

About | Systems pharmacology and mechanistic modeling, simulation, and analysis to accelerate and de-risk drug R&D

We support cutting-edge therapies with a variety of clients*

- AbbVie
- Alexion
- Biogen
- Checkpoint
- Codiak
- Compass
- CytomX
- Gritstone
- Ironwood
- Jounce
- KSQ
- Northern Biologics
- Novartis
- Obsidian
- OncoMyx
- Pandion
- Pfizer
- Revitope
- Sanofi
- Shire
- Syntimmune
- Takeda
- Tusk
- Verseau
- Xencor
- Xilio
- Zymeworks

>80%

Repeat business rate

130+

Projects

>50

Clients

\$4.7M

NIH and FDA grant funding

Areas of impact for systems pharmacology throughout drug R&D

Early Feasibility

Lead Generation

Clinical Candidate Selection

IND

Early Stage Clinical

Late Stage Clinical

Therapeutic Concept

Optimal Properties

Experimental Design and Prioritization

Therapeutic Index

Competitor Differentiation

Early Dose Predictions

Species Translation

FIH Dose/Regimen

In-licensing Risks

Indication

Indication Hopping

RP2D

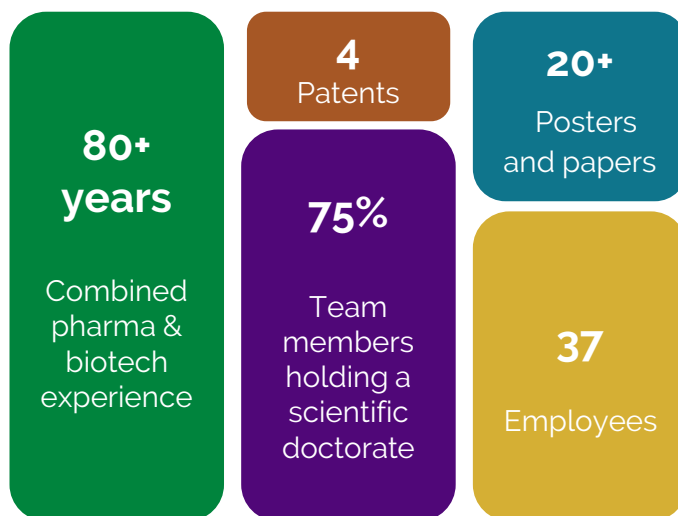
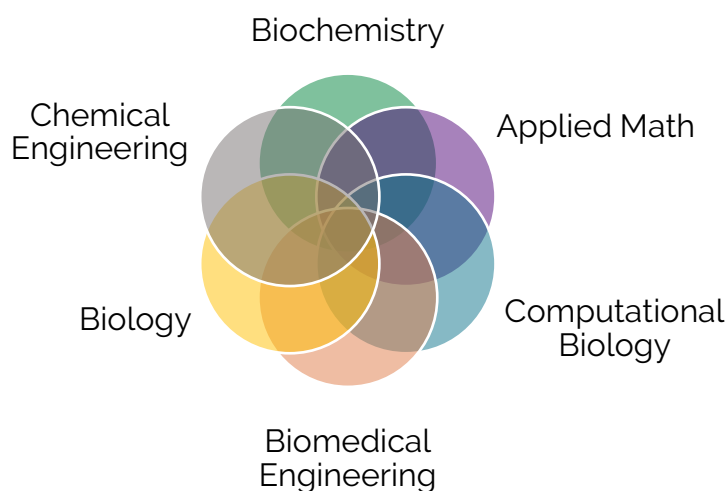
Dose Expansion

Patient Stratification

BLA

* This list only includes clients in the public domain.

Our interdisciplinary team has a breadth of pharma and biotech experience



Our modeling services include, but are not limited to the following

- Semi-mechanistic PK/PD
- Quantitative Systems Pharmacology (QSP)
- Quantitative Systems Toxicology (QST)
- Pre-IND and IND writing
- PK/PD analysis
- Bioinformatics
- Population PK/PD
- Biomarker data analysis
- Pathway model development
- Toxicokinetic data analysis

Our experience spans many therapeutic areas and drug concepts

Therapeutic Areas	Drug Concepts	
<ul style="list-style-type: none"> • Oncology • Immuno-oncology • Inflammation & Immunology • Infectious Disease • Respiratory/ Cardiovascular • CNS/ Alzheimer's Disease • Metabolic • Pain • Rare and Orphan • Ocular Disease 	<ul style="list-style-type: none"> • Large Molecules <ul style="list-style-type: none"> • Monoclonal Antibody • Antibody Drug Conjugate • Bi/Tri-specific • Tissue Targeting Biologics • Peptides • Fusion Protein Multi-specifics • Multi-specifics vs. Fixed-Dose Combination • Blood-brain barrier (multi-specifics) • Pro biologics • Prodrug 	<ul style="list-style-type: none"> • Cell Therapies • Gene Therapies • Small Molecules <ul style="list-style-type: none"> • Irreversible binders • Proteostasis • Combination Therapies • Lipid Nanoparticle • RNA / RNAi Therapies